

envirotile[®]

The revolutionary new roof tile. **Lighter** to carry, **easier** to fix, **better** for the planet.



eurocell[®]

All together better

ENVIROTILE

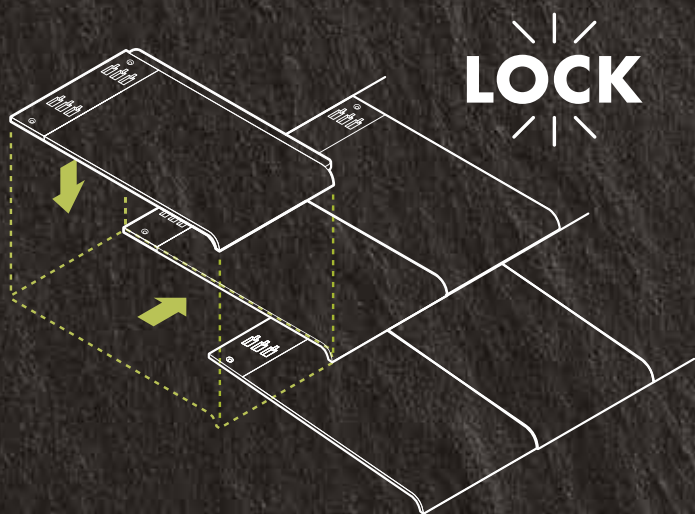
WHY CHOOSE ENVIROTILE?

The lightest, biggest roof tiles on the market with a unique interlocking system that makes any job quick and easy to fix.

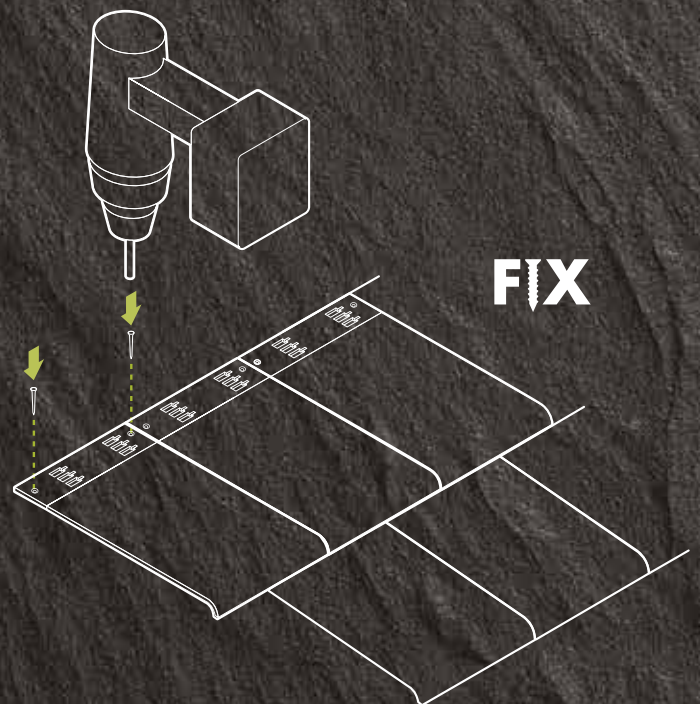
Unbreakable, dry cut tiles made from 75% recycled materials save hassle and environmental impact.

Performing on pitches as low as 12.5 degrees and good for all structures that can't handle a lot of weight, Envirotile is perfect whatever the job.

So whether the problem roof is a main frame or a lightweight conservatory, Envirotile is the answer.



Perfectly positioned every time



Simply secure with a screw

BENEFITS OF ENVIROTILE ROOF TILES



TIME BACK IN YOUR DAY

- ✓ Bigger tiles make for fast coverage
- ✓ Interlocking system means a quick fix
- ✓ Carry more tiles in one go
- ✓ Dry cut in place without dust

MONEY BACK IN YOUR POCKET

- ✓ No breakages to replace
- ✓ No need for eaves courses

PEACE OF MIND

- ✓ 40 year guarantee
- ✓ Gale force guarantee with tile replacement service
- ✓ Anti-fungal properties mean hassle free homes for years to come



Faster to fit and more secure with unique fitting system



Lightweight and easy to install



Made from 75% recycled materials



Anti fungal properties



Can be installed to a minimum 12.5° pitch



Weather tested to 147mph



40-year guarantee for peace of mind

SAFE IN A STORM

40 YEARS PEACE OF MIND AND A GALE FORCE GUARANTEE



Designed to withstand the worst of weathers, Envirotile is fully guaranteed to perform in severe UK wind loads and has been weather tested up to 147 miles per hour. We also offer a free replacement service for any tiles dislodged by gale force winds up to 65 mph.

We're so confident in our product, we guarantee it for 40 years. That's good for you and good for your customer.



Warranty Details Envirotile

Envirotile is covered by a forty(40) year warranty against material product defect or failure of the product to perform on a roof as an effective roofing product, when subject to normal use. For the full terms and conditions of this warranty please ask our branch staff for further documentation.

GOOD FOR OUR PLANET



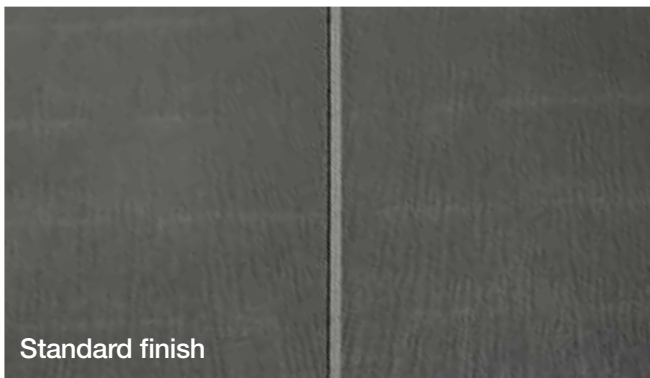
STYLISH AND SUSTAINABLE

Available in four different colours and two stylish finishes, Envirotile has something for every project. Its also made from 75% recycled product, the most sustainable tile on the market.

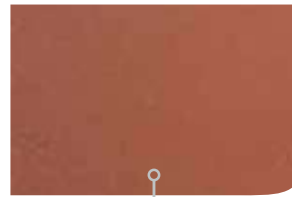
The standard tile has a beautifully textured and contemporary finish, whilst the slate effect tile is perfect for more traditional looking jobs.



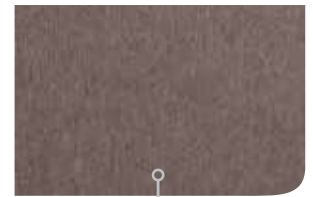
Slate-effect finish



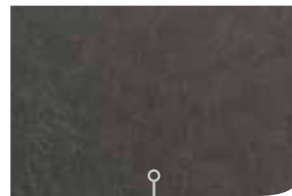
Standard finish



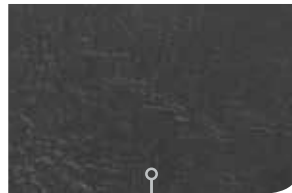
TERRACOTTA



DARK BROWN

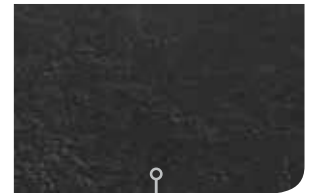


SLATE GREY



ANTHRACITE GREY

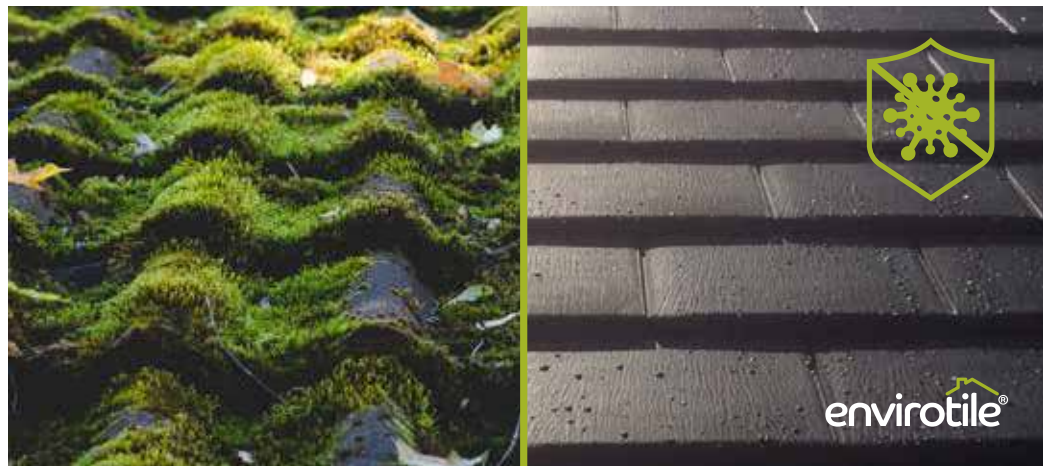
Slate range only



ANTHRACITE BLACK

Standard range only

The finish also offers and improved grip surface to get the job done safely, and anti fungal properties to ensure minimal maintenance for years to come.



VERSATILE

FOR ALL ROOF TYPES

From lightweight conservatories to main frame roofing, Envirotile has your job covered.



CERTIFIED

BACKED BY EXPERTS



Envirotile has undergone the most rigorous testing with many professional bodies to ensure that it is more than fit-for-purpose and will withstand all the British weather can throw at it.

Envirotile is also backed by GreenSpec, the foremost 'Green Building' resource in the UK. Independent of companies and trade bodies and launched in 2003 with government funding, GreenSpec promotes sustainable building products, materials and construction techniques.



EN 13859-1
2012



Test No. P101133-
1000 Issue: 2



BS5534



ENVIROTILE

COMPONENTS LIST

Envirotile Slate Single – Size: L:365mmxW:325mmxD:11mm

Slate Grey **ENVLSLSSG**

Dark Brown **ENVLSLBBR**

Terracotta **ENVLSLSTR**

Anthracite Grey **ENVLSLBBK**

Envirotile Slate Double – Size: L:365mmxW:630mmxD:11mm

Slate Grey **ENVSLDSG**

Dark Brown **ENVSLDBR**

Terracotta **ENVSLDTR**

Anthracite Grey **ENVSLDBK**

Envirotile Slate Half – Size: L:365mmxW:175mmxD:11mm

Slate Grey **ENVSLHSG**

Dark Brown **ENVSLHBR**

Terracotta **ENVSLHTR**

Anthracite Grey **ENVSLHBK**



Ridge Cap – Size: L:425mmxW:245mmxH:105mm

Slate Grey **ENVSLRCSG**

Dark Brown **ENVSLRCBR**

Terracotta **ENVSLRCTR**

Anthracite Grey **ENVSLRCBK**

Gable End Cap – Size: L:28mmxW:325mmxH:178mm

Slate Grey **ENVSLGEPG**

Dark Brown **ENVSLGEPBR**

Terracotta **ENVSLGEPTR**

Anthracite Grey **ENVSLGEPBK**

Hip Cap – Size: L:425mmxW:165mmxH:70mm

Slate Grey **ENVSLHCSG**

Dark Brown **ENVSLHCBR**

Terracotta **ENVSLHCTR**

Anthracite Grey **ENVSLHCBK**

Hip End Cap – Size: L:180mmxW:165mmxH:90mm

Slate Grey **ENVSLHECSG**

Dark Brown **ENVSLHECBR**

Terracotta **ENVSLHECTR**

Anthracite Grey **ENVSLHECBK**

Ridge To Apex – Size: L:252mmxW:292mmxH:145mm

Slate Grey **ENVSLRACSG**

Dark Brown **ENVSLRACBR**

Terracotta **ENVSLRACTR**

Anthracite Grey **ENVSLRACBK**



ENVIROTILE STANDARD

COMPONENTS LIST

Envirotile Standard Single – Size: L:365mmxW:325mmxD:11mm

Anthracite Black **ENVSTSAG**

Slate Grey **ENVSTSGY**

Dark Brown **ENVSTSBR**

Terracotta **ENVSTR**

Envirotile Standard Double – Size: L:365mmxW:630mmxD:11mm

Anthracite Black **ENVSTDAG**

Slate Grey **ENVSTDGY**

Dark Brown **ENVSTDBR**

Terracotta **ENVSDTR**



Ridge Cap – Size: L:475mmxW:300mmxH:170mm

Anthracite Black **ENVSTRCAG**

Slate Grey **ENVSTRCGY**

Dark Brown **ENVSTRCBR**

Terracotta **ENVSTRCTR**

Gable End Cap – Size: L:30mmxW:300mmxH:170mm

Anthracite Black **ENVSTGECAG**

Slate Grey **ENVSTGECGY**

Dark Brown **ENVSTGECBR**

Terracotta **ENVSTGECTR**

Hip Cap – Size: L:425mmxW:150mmxH:70mm

Anthracite Black **ENVSTHCAG**

Slate Grey **ENVSTHCGY**

Dark Brown **ENVSTHCBR**

Terracotta **ENVSTHCTR**

Hip End Cap – Size: L:180mmxW:150mmxH:70mm

Anthracite Black **ENVSTHECAG**

Slate Grey **ENVSTHECGY**

Dark Brown **ENVSTHECBR**

Terracotta **ENVSTHECTR**

Ridge To Apex – Size: L:280mmxW:300mmxH:170mm

Anthracite Black **ENVSTRTAAG**

Slate Grey **ENVSTRTAGY**

Dark Brown **ENVSTRTABR**

Terracotta **ENVSTRTATR**



ENVIROTILE STANDARD

COMPONENTS LIST

Standard Lowlie Vent –
Size: L:365mmxW:325mmxD:11mm + Profile

Anthracite Grey **ENVSTLVTAG**

Grey **ENVSTLVGY**

Brown **EENVSTLVBTR**

Terracotta **ENVSTLVTR**

Standard Cowl Vent –
Size: L:365mmxW:325mmxD:11mm + Profile

Anthracite Grey **ENVSTCVTAG**

Grey **ENVSTCVGY**

Brown **ENVSTCVBTR**

Terracotta **ENVSTCVTR**

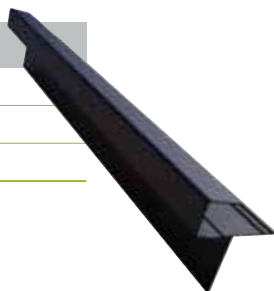


3m Dry Verge – Size: L:3000mm

Anthracite Grey **ENV3MDVAG**

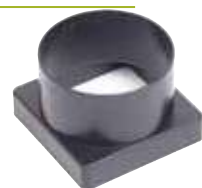
Brown **ENV3MDVBR**

Terracotta **ENV3MDVTR**



Square to Round Pipe Adaptor – Size: 110mm

Square to Round Pipe Adaptor **ENVSRPA110**



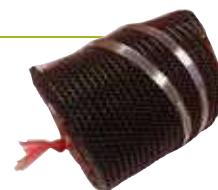
Ventilated Eaves Bar/Starter Rail –
Size: L:600mmxW:48mmxH:12mm

Eave Bar **ENVEB**



Flexitube and clips – Size: 112mm

Flexitube and clips **ENVFXCL**



Dry Verge Bracket

Anthracite Grey **ENVDVBR**

Brown **ENVDVBRBTR**

Terracotta **ENVDVBRTR**



Fixings

90 x 6.3mm SS Pozi Pan Self Tapping Screw **ENVSCREW90**

32 x 4.2mm SS Pozi Pan Self Tapping Screw **ENVSCREW32**

Screw Cover Cap – Size: Large

Anthracite Grey **ENVSCCLAG**

Grey **ENVSCCLGY**

Brown **ENVSCCLBR**

Terracotta **ENVSCCLTR**

Screw Cover Cap – Size: Small

Anthracite Grey **ENVSCCSAG**

Grey **ENVSCCSGY**

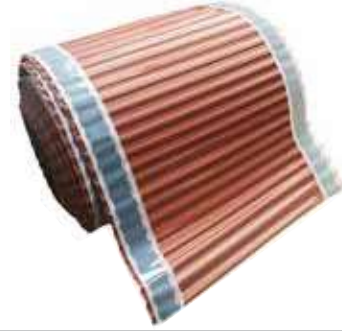
Brown **ENVSCCSBR**

Terracotta **ENVSCCSTR**



Aluminium Hip Roll – Size: Dx180mmxL:6000mm

Aluminium Hip Roll 180mm **ENV180HIPROLL**



Duo Plus Tape – Size: Dx40mmxL:6000mm

Duo Plus Tape **ENVTAPE**



Ventilated Ridge Roll – Size: Dx330mmxL:6000mm

Ventilated Ridge Roll 330mm **ENV330RIDGEROLL**



Enviroloy – Size: Size: Dx130mmxL:25000mm

Enviroloy **ENVIROLAY**



HR FIREPROOF UNDERLAY

ENVIROLAY

Rest assured our specially designed fire resistant underlay meets the new British Standards for BS 5634. It's rigorously tested (bre and exova) and meets the requirements for wind uplift resistance so you know it's fit for purpose.

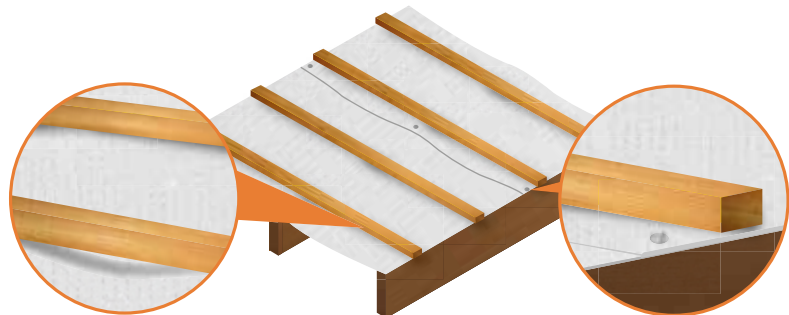


Diagram above shows: Overlap, batten gauge, sag and fixing of Enviroloy Premier Roofers' HR Underlay



For more information about Envirotile Roof Tiles,
call our customer services team on **0800 988 3047**,
or visit **www.eurocell.co.uk/envirotile**

Eurocell plc, High View Road, Alfreton, Derbyshire DE55 2DT



eurocell.co.uk